

COMPANY PROFILE

A proud history of quality service!





Hit Construction is a member of the Hit Global Industrial Group—a multidimensional private equity investment company that focuses on property development, real estate, construction, mining, manufacturing and farming.

TABLE OF CONTENTS

01 ABOUT THE COMPANY	4
02 VISION & MISSION	5
03 OUR VALUES	5
04 PLANT EQUIPMENT	6
05 OUR SERVICES	6
06 KEY STRENGTHS	9
07 CULTURE & BENEFITS	9
08 WHY CHOOSE US?	10
09 COMPANY INFORMATION	16
10 THANK YOU NOTE	18

We strive to offer the finest quality designs that matches client life style and dream, providing quality services.



ABOUT THE COMPANY

Hit Construction is a well-established company that provide construction services and materials required to undertake civil engineering projects, structures, buildings and general repairs and maintenance. The company have have human resources that have the skill set to manage both technical, financial and social demands of construction projects. The human resources include construction managers with vast experience in the construction industry, civil and structural engineers, project managers, quantity and land surveyors, field and administrative staff. The company was founded by Mr Talent Gundani and he is still the managing director.



66

You can dream, create....

design, and build the most wonderful place in the world. But it requires people to make the dream a reality.” – Walt Disney

We Set Standards greater than expected

Hit Construction offers a culture of empowerment, integrity and accountability



Hit is involved in developments as project and programme managers. This involves land identification, development and final construction.



OUR VISION

Our vision is to earn commercial values. Our goal is to rapidly deliver mature innovation to every project and to ensure that every project exceed client expectation.

OUR MISSION

We strive to offer the finest quality designs that matches client life style and dream, providing quality services. To this end we are committed to:

- Being recognized by our clients for being efficient, responsive and oriented to their needs.
- Being recognized by the business community for our diligence and quality of service



OUR VALUES



Ethics & Compliance - We do what we say we will do according to industry standards.



Innovation - We are constantly focused on production, to achieve excellence



Consistency Quality - We endeavor to exceed customer expectations.



Drive - Above all we endeavor to exceed customer expectations.



Safety - We are constantly focused on production, while preserving everyone.



PLANT & EQUIPMENT

Our equipment comprises of:

Scaffolding, concrete pumps, chain blocks, dumpy levels, power tools, compressors, vibrators, hoisting equipment, skid steers, backhoes, trucks, welding machines, generators, water pumps, formwork, safety harness, excavation equipment and various hand tools

OUR SERVICES

Our expertise expands from all construction disciplines;

CIVIL ENGINEERING

Water and sewer reticulation, pavements, storage water drainages and bulk earth work.

CONSTRUCTION MANAGEMENT

Before the first shovel of dirt is turned on, our primary objective is to mitigate and control the risk associated with the common project values which are time, cost, quality and safety. We work with designers to ensure that the details of the design are efficient and cost effective. The process entails review of Building materials, application, installation technique, field execution and building systems before construction begins. We prevent and solve problems-and it is the smart owner who brings construction management professionals on board to discuss end user needs during the pre-design phase. We hold the promise to close the gap between design and end user satisfaction by offering project feasibility reviews, constructability analysis and life cycle cost evaluation.

STEEL STRUCTURAL

Farm structures, warehousing, Industrial and commercial structures.

BUILDING PROJECTS

Residential multifamily dwellings, apartments, commercial buildings and general maintenance.

CONSTRUCTION ESTIMATING

At appropriate intervals during the design stage, our team provides detailed, quantitative cost estimates for the purposes of project planning and analysis. We can provide you with everything from executive level pro-forma statements to comprehensive project budgets.



66

A great building must begin with ...

the immeasurable, must go through measurable means when it is being designed, and in the end must be unmeasured.” – Louis Kahn



VALUE ENGINEERING STUDIES

If projected costs go beyond your budget, Hit Construction can perform a formal, detailed analysis of the project design to identify potential savings in construction, energy, and maintenance costs. Working in cooperation with the project designers, we provide you with recommendations that put your project back on track.

MATERIALS PROCUREMENT

Working from design documents, HIT prequalifies trade contractors and suppliers, develops bid packages, administers the bidding process, and negotiates all contracts and purchase orders. Hit construction also supplies construction and hardware materials. By contracting directly with trade contractors and suppliers, you avoid costly mark-ups..

PROJECT DOCUMENTATION AND ADMINISTRATION

Hit Construction management efforts extend to preparing detailed documentation of all aspects of the process, including administration of contracts, schedule coordination, payment requisition review, progress assessments and completion of all punch lists. We work with you right through facility startup.

DETAILED PROJECT SCHEDULING

At Hit Construction, scheduling means a lot more than fancy computer software. It means understanding the sequence, timing and interrelationships of all steps of your project. Schedules are referred to daily, serving as the focal point for planning and progress measurement. Our scheduling expertise means your building goes up faster? saving you financing costs and improving your cash flow.

SITE MANAGEMENT

Using only seasoned construction professionals, Hit Construction provides your project with fulltime, on-site management. These professionals coordinate and oversee every step of the process, avoiding costly errors and unsound shortcuts

PROJECT EVALUATIONS

Hit Construction can provide an independent evaluation of a project's current or ongoing status for the purpose of analysis and recommendations.

CERTIFICATION & MEMBERSHIP

- Zimbabwe Building Contractors Association [zbca]
- Procurement Regulatory Authority [praz]
- National Employment Council for Construction [nec]
- Ministry of Local Government Public Works
- Construction Industry Federation of Zimbabwe [cifoza]
- National Social Security Authority (NSSA)



Building • Civil • Structures

KEY STRENGTHS

- Competitive pricing
- Diverse activities and depth of experience
- Proven planning and construction management skills
- Reliable highly skilled workforce
- Ability to work in operational environments
- A culture of quality, safety, delivery and integrity



CULTURE & BENEFITS



Competitive wages and benefits



Diverse Activities and Experience



Support From Management



A culture of quality, Safety, Delivery & Integrity



Opportunities to Train & Up-skill



HIGH END QUALITY



Hit Construction commitment is to ensure that the services, products and installations it provides, in the provision and delivery of Site Services and Civil Engineering Projects for the Construction Industry, satisfy their specified requirements, are delivered on time, and are defect free. Hit also ensures that these services are in compliance with all relevant statutory and regulatory requirements, including in respect of Health, Safety, Environmental and Ethical matters. Particular emphasis is placed on the experience, expertise and capability of our staff, on the provision of services in a professional manner, and on ensuring the reliability, economy and suitability of the services, products and installations provided.

Our Staff, Suppliers, Subcontractors and Clients will be encouraged and monitored to adopt best practice, which will lead them to continually improve their and our performance.

Good buildings come from good people, and all problems are solved by good design.”

— Stephen Gardiner

MAXIMUM SAFETY



The personal safety and health of each employee of our organization is of primary importance. We believe that our employees are our most important assets and that their safety at the worksite is our greatest responsibility. The prevention of occupationally induced injuries and illnesses is of such consequence that it will be given precedence over operating productivity whenever necessary. Management will provide all mechanical and physical facilities required for the personal safety and health of each of its employees.

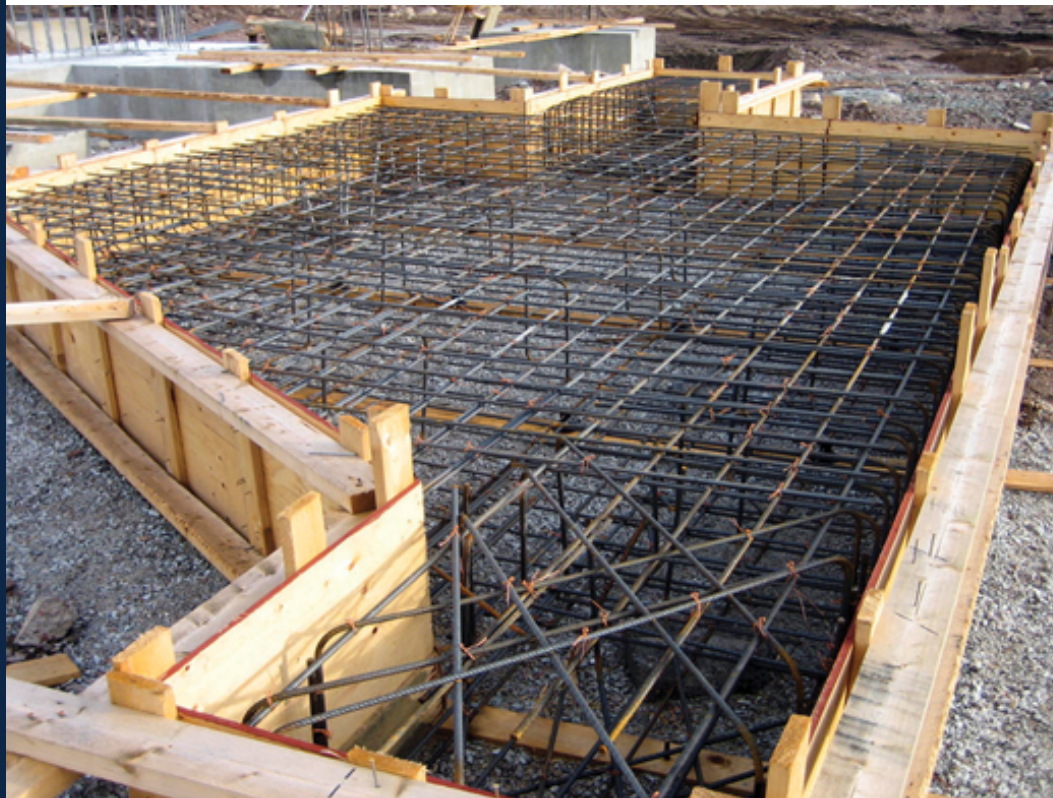
Our goals are to reduce employee injury, prevent potential hazards through consistent safety management, and ensure compliance with relevant safety and health standards. Through the attainment of these goals, our company will remain competitive and viable in our industry. Management will procure the necessary resources to execute the objectives of our company's safety and health program. We will hold managers, supervisors and employees accountable for meeting their safety responsibilities.



Our efforts for constant technological innovation and development are also given priority status in our ground engineering division. We are not satisfied until we have found the best technical and economic solution for each specific client. Our engineering teams work tirelessly to make this possible. Over the course of the entire project, they work closely together and jointly develop all details, from structural designs to work techniques. All processes are coordinated and optimized. In combination with their wealth of experience, they are capable of solving even the most difficult ground engineering task.

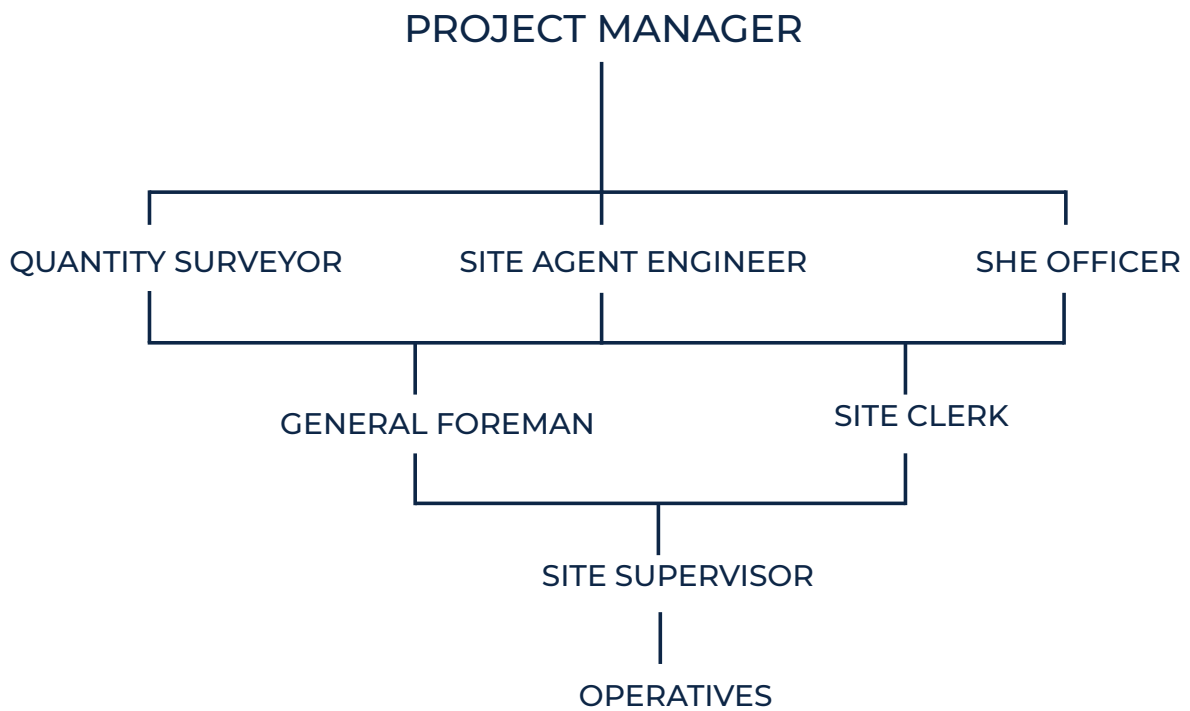
Our ground working division has the following structure, responsible for smooth communication and array of jobs.

FUNDAMENTAL MASTERPIECE



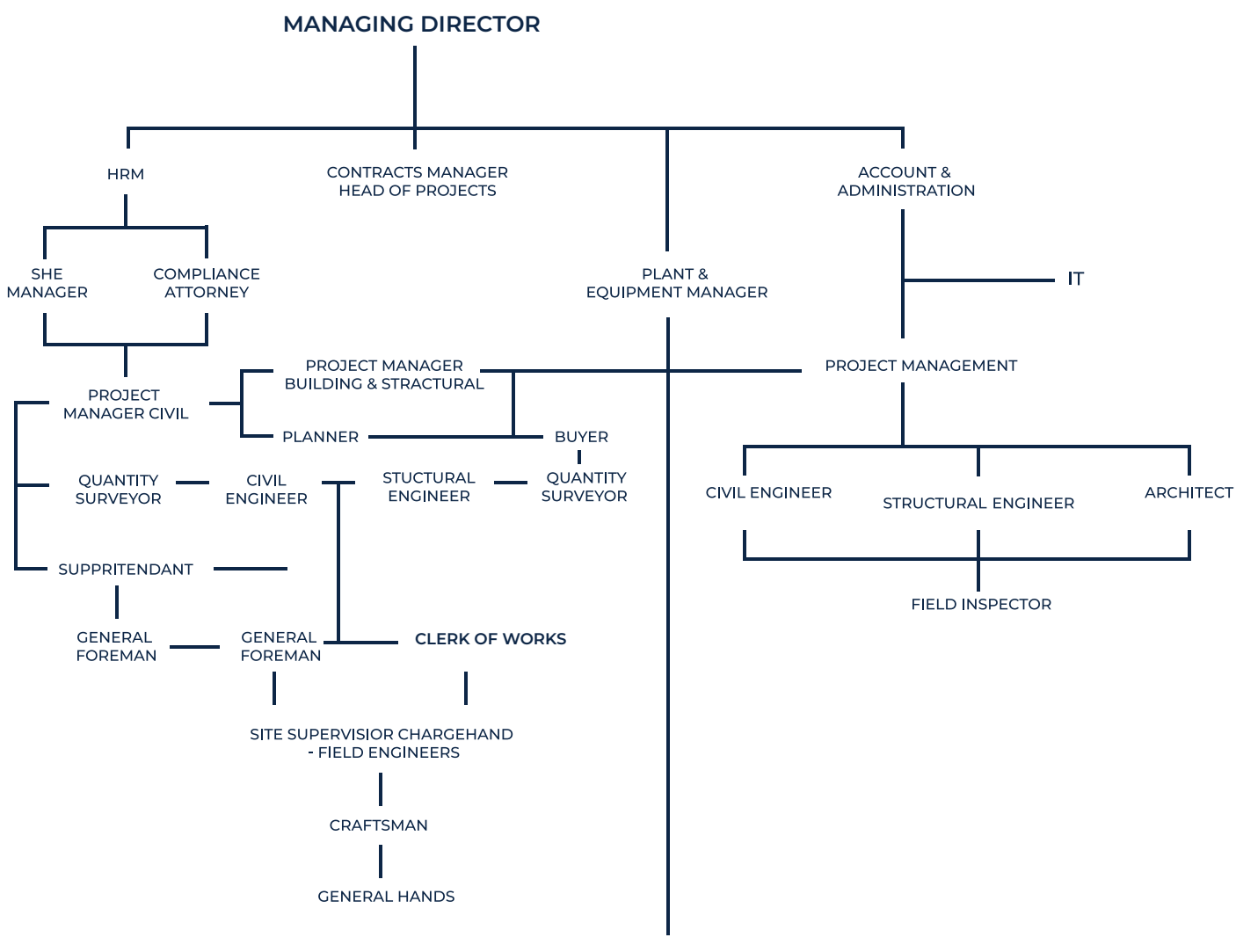


SITE ORGANOGRAM





ORGANIZATIONAL CHART





COMPANY INFORMATION

HIT CONSTRUCTION (P.V.T) L.T.D

Company Registration Number: 169360

93 Harare Drive Malbrough East, Harare

Zimbabwe

Telephone Number: 0242 787912

Mobile Number: +263 776985697 | +263 719985697

Email Address: info@hitconstruction.co.zw

: sales@hitconstruction.co.zw

: hitconstruction10x@gmail.com

Website : www.hitconstruction.co.zw

WE ARE SOCIAL

Facebook : Hit Construction Zimbabwe

Instagram : Hit Construction



**THANK YOU FOR YOUR
BUSINESS AND YOUR TRUST.**

